



# 86-88 GRESHAM ROAD, BRIXTON

## OVERVIEW

### CLIENT

Taylor Wimpey

### SECTORS

Commercial  
Residential

### LOCATION

Brixton

### PLANNING AUTHORITY

London Borough of Lambeth

### HIGHWAY AUTHORITY

London Borough of Lambeth

### PROJECT TEAM

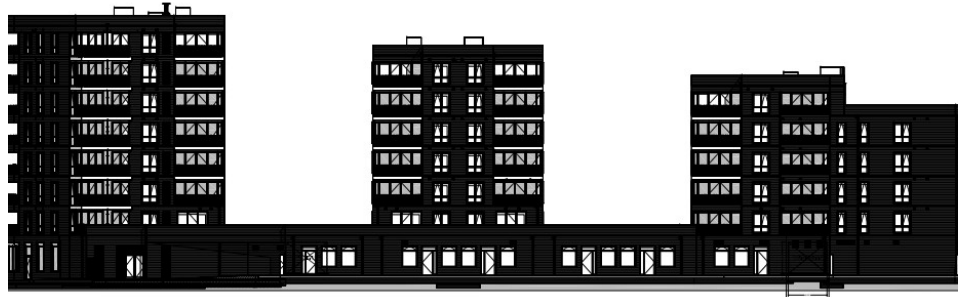
Taylor Wimpey

### PROJECT MANAGER

Stephen Kemp

### PROJECT DIRECTOR

Daniel Ekstrand



## PROJECT

We were commissioned by Taylor Wimpey, to provide the Travel Planning Co-Ordination role for their site at 86-88 Gresham Road, Brixton. This is to fulfil the legal obligation included in the S106 agreement and usually last for a five year period.

In this instance we had originally submitted the Travel Plan that was linked to the legal agreement, however the monitoring role had never been instructed. The travel plan officer at London Borough of Lambeth threatened to enforce the obligation on a site, despite it no longer being within the Client's control.

## APPROACH

Transport Planning Associates successfully negotiated with London Borough of Lambeth over a period of two months, without an instruction in place.

After considerable negotiations we reached a compromise involving a one year monitoring exercise only, instead of five.

## OUTCOME

The reduced obligation saved a significant amount of fee in undertaking the Travel Plan Co-Ordination role (-75%), as well as a potential legal challenge and associated legal fees due to the London Borough of Lambeth's inability in conceding the irrelevance of the undertaking 5 years post occupation for what is a car-free scheme.

## RELATED PROJECTS

Swingate Park, Hellingly

