

OVERVIEW

CLIENT
Lindum

SECTORS
Retail

LOCATION
Winthorpe, Newark

PLANNING AUTHORITY
Newark and Sherwood District Council

HIGHWAY AUTHORITY
Nottinghamshire County Council

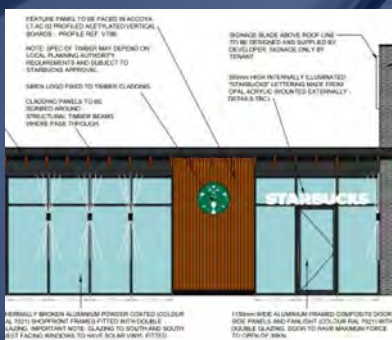
PROJECT TEAM
Lindum
John Deere

PROJECT MANAGER
Tim Hornby

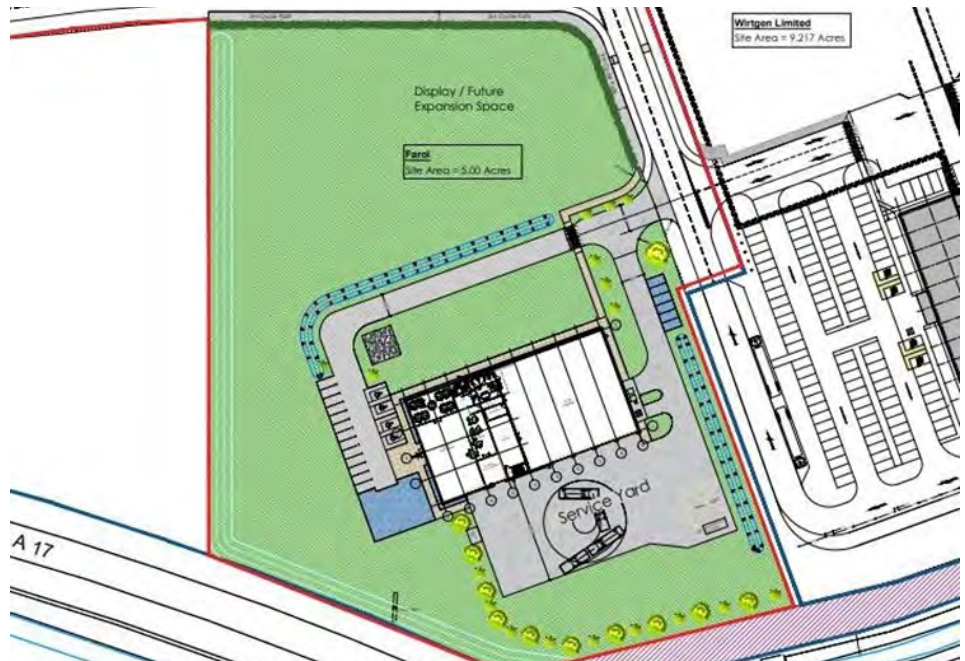
PROJECT DIRECTOR
Julian Clarke

RELATED PROJECTS

Land North of A17, Winthorpe



OVERFIELD PARK, NEWARK



PROJECT

We were instructed by Lindum on behalf of John Deere to support a planning application for the provision of an agricultural machinery dealership on land to the north of the A17. The wider site benefits from an allocation with the Newark and Sherwood Local Development Framework for a mixed use development.

APPROACH

To support the planning application, we prepared a Transport Statement, identifying the likely level of trips that would be attracted to the proposed operation. This was supported through discussions with the end operator to ensure the robustness of the work undertaken.

The work demonstrated that the development could operate safely without an impact on the local high network and ensured that journeys to the site, by all modes of transportation were appropriately considered. As part of this exercise, a car park accumulation exercise was undertaken to demonstrate an appropriate provision was to be provided.

Following submission of the planning application, the Highway Authority raised no objection to the scheme, only seeking to ensure aspects of the development were appropriately managed by way of suitably worded conditions and increasing the footway width across the site's frontage.

OUTCOME

The scheme was granted planning permission in 2020.

