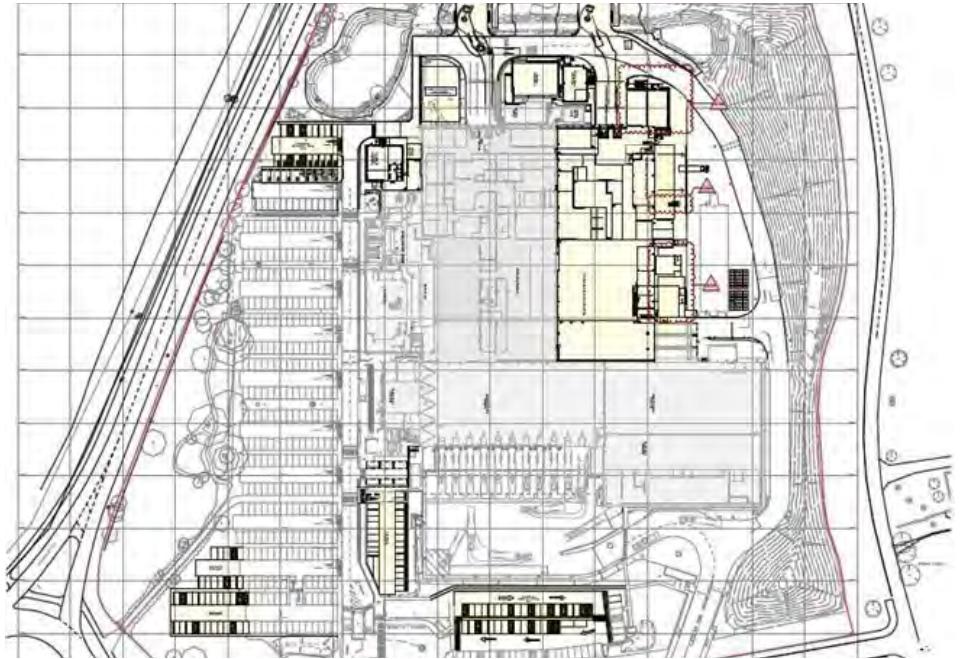




BRADGATE BAKERY



OVERVIEW

CLIENT
RG + P

SECTORS
Commercial
Warehouse & Distribution

LOCATION
Leicester

PLANNING AUTHORITY
Leicester City Council

HIGHWAY AUTHORITY
Leicester City Council

PROJECT TEAM
Samworth Brothers
CoxFreeman

PROJECT MANAGER
Stephen Kemp

PROJECT DIRECTOR
Daniel Ekstrand

PROJECT

We were commissioned by RG + P, on behalf of Bradgate Bakery, to provide a suite of documents to support proposed development of their existing facility at Bradgate Bakery, Bennion Road, Leicester, LE4 1WX.

The development proposals sought planning permission for the extension of their existing factory (Use Class B2), along with additional car parking, associated landscaping, hardstanding and ancillary works

APPROACH

A Scoping Note was prepared in the initial phase of the project to inform discussions with the local planning authority to devise an agreeable transport strategy.

To support the application, a Transport Statement and Travel Plan were produced.

The Transport Statement highlighted the proposals compliance with the relevant transport policies on a regional and national scale. The document also demonstrated the proposed development would not generate an adverse transport impact on the operation of the local highway network.

The Travel Plan was produced to form the framework of the future staff Travel Plan. The document proposed a host of transport measures to encourage the use of sustainable transport modes to reduce the need for trips to be undertaken to and from the development by private car

OUTCOME

The planning application was submitted to the local planning authority in February 2024.

RELATED PROJECTS

West Point, Bracknell

