

FORMER LIBRARY SITE, KIRKBY

OVERVIEW

CLIENT

Invest Knowsley

SECTORS

Leisure
Commercial

LOCATION

Kirkby

PLANNING AUTHORITY

Knowsley Council

HIGHWAY AUTHORITY

Knowsley Council

PROJECT TEAM

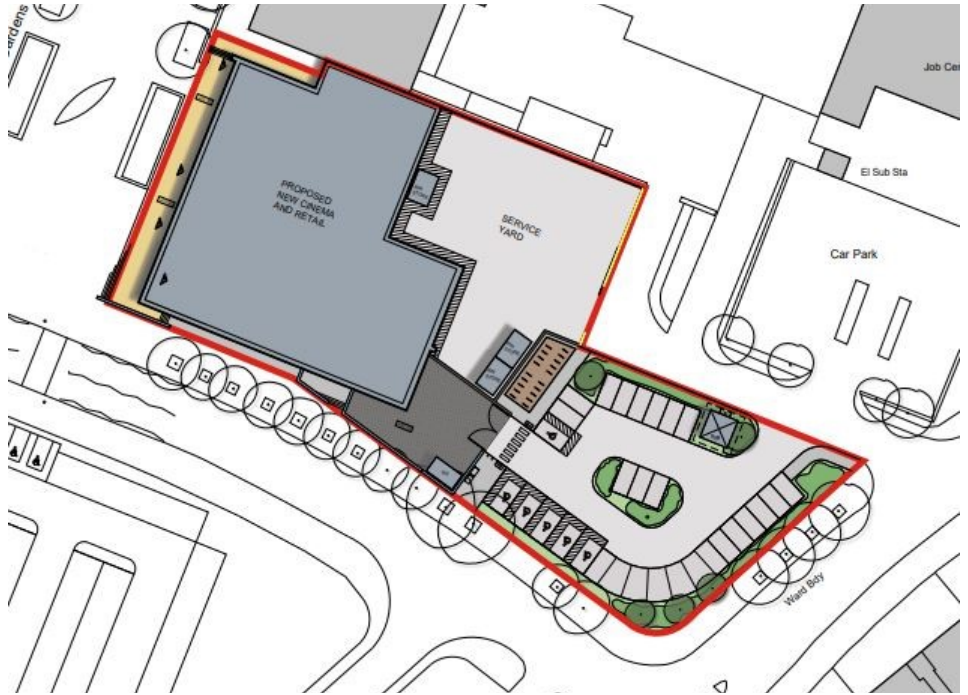
Saunders Architects
Knowsley Council

PROJECT MANAGER

Susan Haslam

PROJECT DIRECTOR

Rupert Lyons



PROJECT

The proposed development will regenerate the former Kirkby library development site with a new multi-screen cinema, two restaurant units and one pub / restaurant unit. A service yard and car park will be located to the rear of the site.

APPROACH

We produced a Transport Statement and Travel Plan to support the development, which benefits from a good standard of accessibility by non-car modes of travel. Consequently, the proposed development exceeded the Council's minimum accessibility scores required by the SPD. Therefore, no further improvement of local transport infrastructure or services was proposed.

Particular consideration was given to the car and cycle parking design for the site. We worked with the wider team to prepare a suitable site layout which balanced highway design requirements and the needs of the Client. The development provided 30 car parking spaces and 38 cycle parking spaces. This represented about 20% of the maximum car parking requirements and 90% of the required cycle parking requirements.

The development is predicted to attract in the order of 1,995 person trips about 10% of which will be in the evening peak hour and none in the morning peak hour.

OUTCOME

Planning consent was granted in November 2020.

RELATED PROJECTS

Land at Elwick Place, Ashford

